

ERSKINE[®]
ATTACHMENTS LLC

www.erskineattachments.com
800.437.6912

GRAPPLE STUMP BUCKET

SKID STEER ATTACHMENT



The Grapple Stump Bucket adds a full featured grapple to our Stump Bucket design. This unit boasts a large grapple cylinder for optimal holding power as you extract and transport stumps of all shapes and sizes. Other engineering benefits include the optimal leverage fulcrum point, reinforced mounting plate, and serrated side edges. Serrated sides provide cutting action to work through stubborn roots.

FEATURES

- Heavy-duty grapple with greasable pins
- 50.3" grapple opening
- 3" x 6" cylinder @ 3,000 psi
- Heavy-duty 1" by 6" cutting edge
- 1/2" steel on sides, bottom, and back of the bucket
- Fulcrum point for prying out stumps and rocks with added leverage

800.437.6912

ERSKINE[®]
ATTACHMENTS LLC

ERSKINE[®]
ATTACHMENTS LLC

www.erskineattachments.com

800.437.6912

GRAPPLE STUMP BUCKET

SKID STEER ATTACHMENT



3" x 6" 3000 psi industrial grade cylinder.

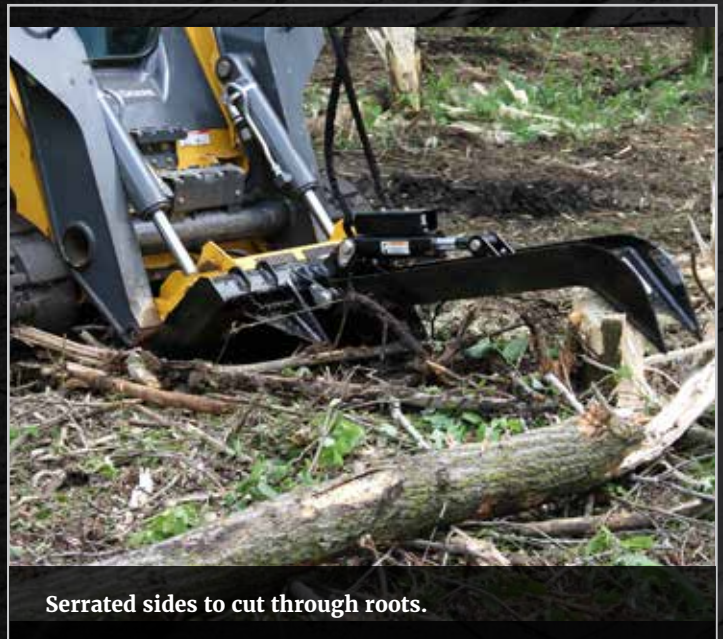


Reinforced mounting plate to handle large loads.

Model	Grapple Stump Bucket
Part Number	900560
Overall Width	45.4"
Overall Length	61.27"
Cutting Edge Width	13.5"
Bucket Width at Cutting Edge	12.1"
Bucket Width at Mounting Plate	21.9"
Replaceable Teeth	3 pin-on teeth
Operating Weight	Approx. 520 lb.

Options

Factory Installed Couplers



Serrated sides to cut through roots.

800.437.6912

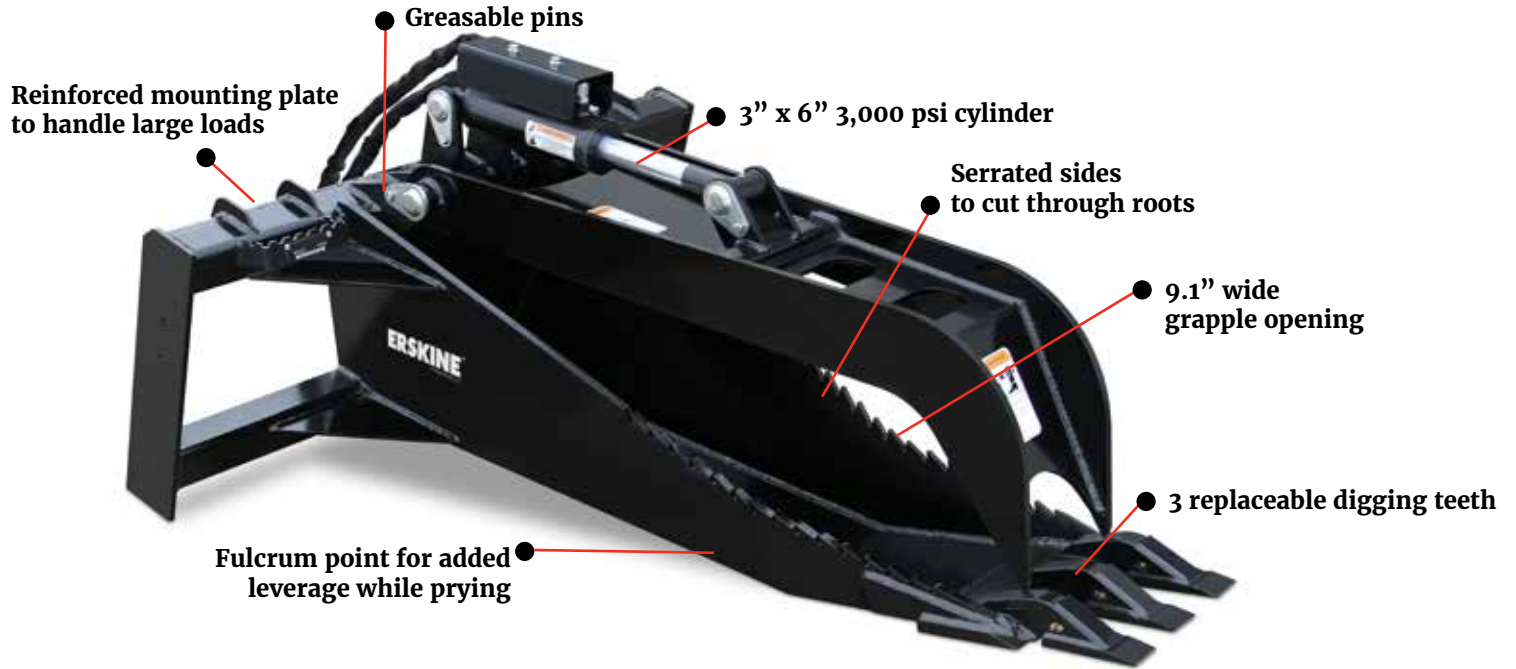
ERSKINE[®]
ATTACHMENTS LLC

ERSKINE[®]
ATTACHMENTS LLC

www.erskineattachments.com
800.437.6912

GRAPPLE STUMP BUCKET

SKID STEER ATTACHMENT



Fulcrum point for added leverage while prying.



9.1" Wide grapple opening and greasable hinge points.

800.437.6912

ERSKINE[®]
ATTACHMENTS LLC