

ERSKINE[®]
ATTACHMENTS LLC

www.erskineattachments.com
800.437.6912

UTILITY SNOW PUSHER

SKID STEER ATTACHMENT



**PUSHING BEATS
SHOVELING...**

The Utility Snow Pusher moves snow up to 5 times faster than a conventional snow blade. Available in 96" and 120" models, this unit is designed for optimal visibility with a height of 34". The design features a high-carbon bolt-on cutting edge and adjustable skid shoes.

FEATURES

- Adjustable height skid shoes and bolt-on cutting edge
- Excellent operator visibility
- 96" and 120" models
- Gusseted end plates for added strength
- Our universal attachment plates fit most skid steers

800.437.6912

ERSKINE[®]
ATTACHMENTS LLC

ERSKINE[®]
ATTACHMENTS LLC

www.erskineattachments.com

800.437.6912

UTILITY SNOW PUSHER

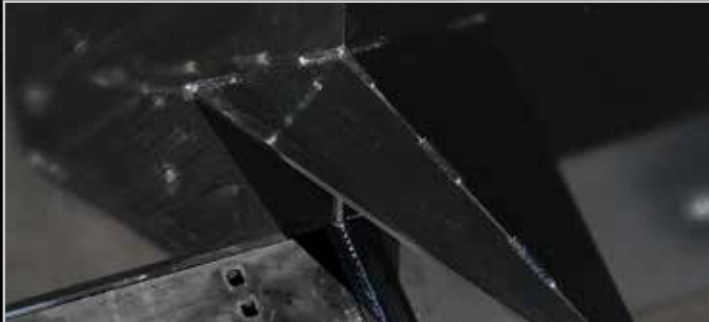
SKID STEER ATTACHMENT



Adjustable AR400 skid shoes.



Adjustable cutting edge.



Gusseted end plates for added strength.



Open top for sight & high volume load capacity.

Model	96"	120"
Part Number	901121	901122
Operating Weight	630 lb.	700 lb.
Maximum Width	35.5"	35.5"
Maximum Height	34"	34"
Maximum Length	101"	125"
Main Cutting Edge	.5" x 8" Adjustable High-Carbon	.5" x 8" Reversible High-Carbon

Options

Urethane Cutting Edge

Rubber Cutting Edge

800.437.6912

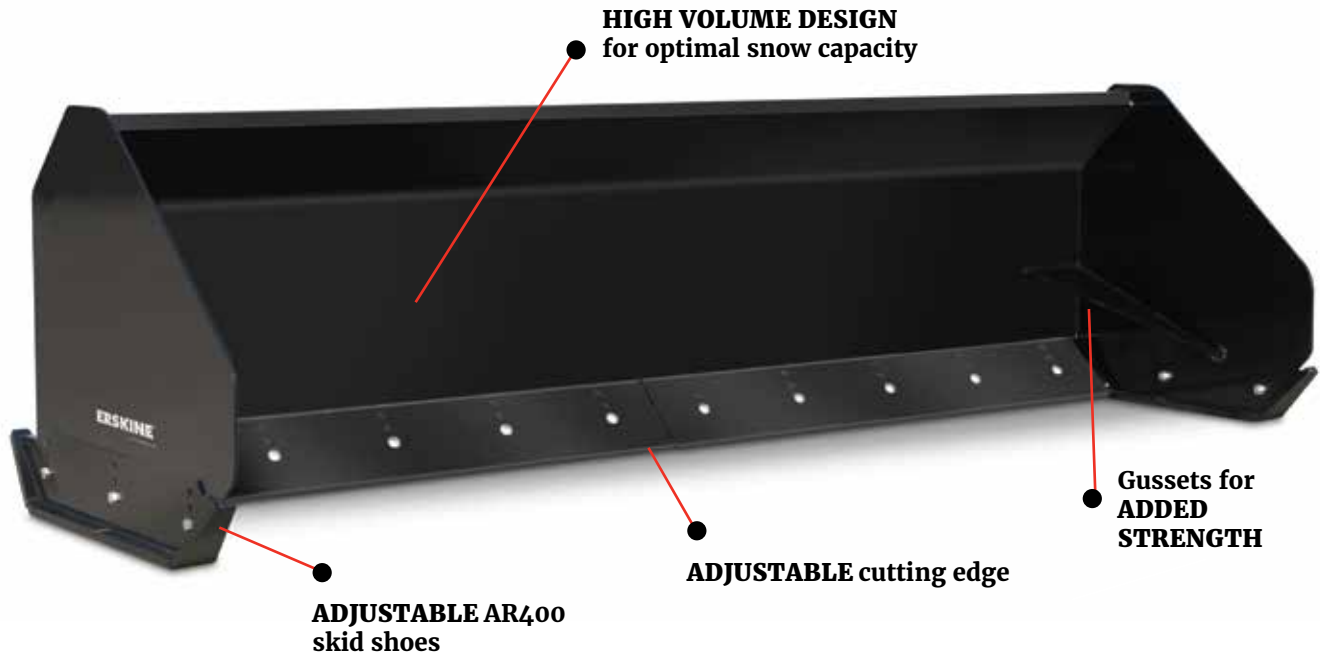
ERSKINE[®]
ATTACHMENTS LLC

ERSKINE[®]
ATTACHMENTS LLC

www.erskineattachments.com
800.437.6912

UTILITY SNOW PUSHER

SKID STEER ATTACHMENT



High volume design for optimal snow capacity.



Moldboard curve allows for little snow build up.

800.437.6912

ERSKINE[®]
ATTACHMENTS LLC