

**PROPRIETARY AND CONFIDENTIAL**  
 THE INFORMATION CONTAINED IN THIS  
 DRAWING IS THE SOLE PROPERTY OF  
**BAUMALIGHT**. ANY REPRODUCTION IN  
 PART OR AS A WHOLE WITHOUT THE  
 WRITTEN PERMISSION OF **BAUMALIGHT**  
 IS PROHIBITED.



#### Description

Weight	Thickness in.	DATE 20-09-2019	DWG. NO. <b>TN560-D03-R3</b>	REV <b>R3</b>
DO NOT SCALE DRAWING	SCALE: 1:27	SHEET 1 OF 3		

ITEM NO.	PART NUMBER	DESCRIPTION	QTY.
1	D001111	Main Weldment	1
2	D001016	Assembly, do not show in BOM	1
3	D001015	13 Tooth Sprocket with seal guard for large planetary	1
4	P2035	.875 cross pin for trencher sprocket	1
5	D001006-New	14T SAE A G70-000004 TN548 Trencher gearbox	1
6	D002160	Complete idler assem with cylinder	1
7	D002161	Idler Bracket Assmbly	1
8	T2020	Cylinder 1.75 x 20.38 x 30.38	1
9	T2012	Grease Pin Assembly	1
10	B2019	Idler Assembly W/ Bearings	1
11	D002364	Dirt Flap Arm	1
12	T2009	Dirt Flap	1
13	TN548-30	Dirt Flap Pivot Plate	4
14	TN548-43	Auger shield	1
15	D001239	Side auger	1
16	D001413-Z96503	Manual Tube 3-1/2 Short	1
17	S6006	60" trencher chain	1
18	60-inch Chain- working	Full Chain without teeth	1
19	D002365	Full Link	42
20	Chain link connector	Chain link connector	2
21	full link	Chain Link	1
22	D001881	Link pin	2
23	C2008	Trencher Cup Tooth - Left	22
24	C2012	Trencher Cup Tooth - Right	20
25	M6006	60" Trencher Chain	1
26	60-inch Chain- working	Full Chain without teeth	1
27	D002365	Full Link	42
28	Chain link connector	Chain link connector	2
29	full link	Chain Link	1
30	D001881	Link pin	2
31	C2008	Trencher Cup Tooth - Left	13
32	C2012	Trencher Cup Tooth - Right	13
33	D002367	Rock tooth link - Left	14
34	C2015	Rotary Cutter R.	1
35	D002332	Carbide tipped Rock Tooth	1
36	D002368	Rock Tooth Link - Right side	14
37	C2017	Rotary Cutter L.	1
38	D002332	Carbide tipped Rock Tooth	1
39	D001594	14T 1-1/4 BM5-200cc, custom motor, 3000PSI cross relief valves - 351-2115-4602210	1

**PROPRIETARY AND CONFIDENTIAL**

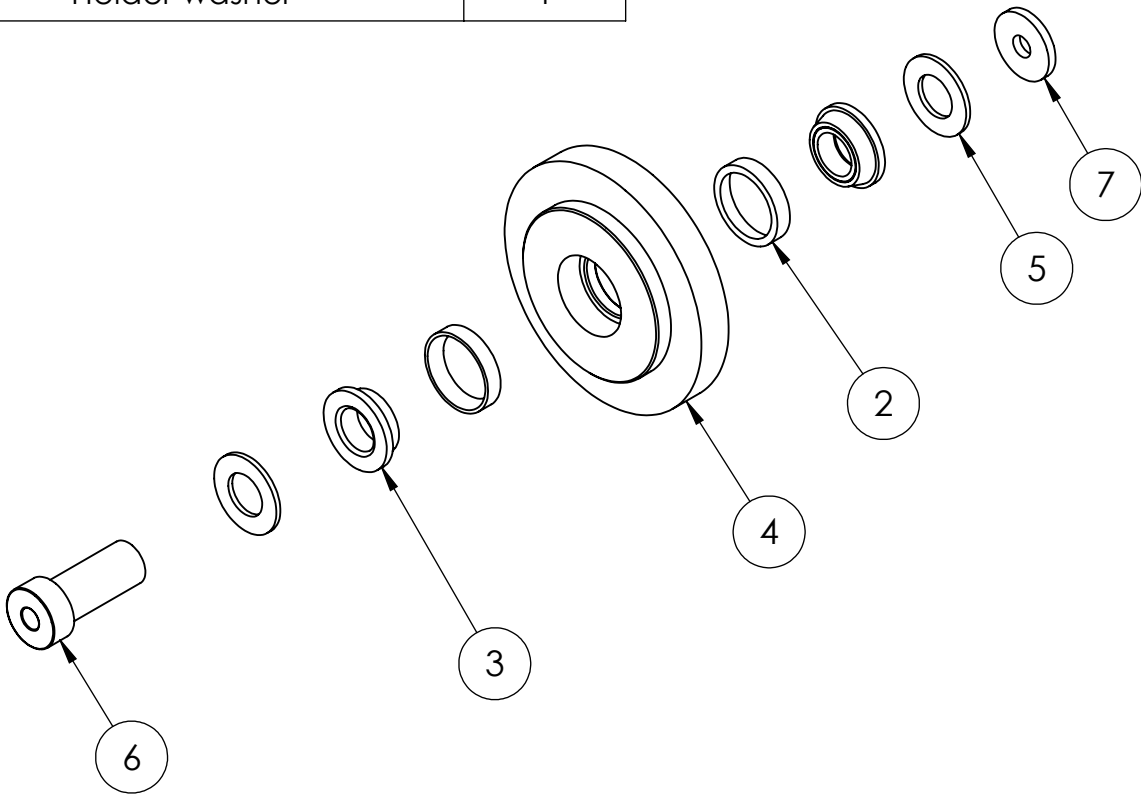
THE INFORMATION CONTAINED IN THIS DRAWING IS THE SOLE PROPERTY OF BAUMALIGHT. ANY REPRODUCTION IN PART OR AS A WHOLE WITHOUT THE WRITTEN PERMISSION OF BAUMALIGHT IS PROHIBITED.



**Description**

Weight	Thickness in.	DATE 20-09-2019	DWG. NO. <b>TN560-D03-R3</b>	REV <b>R3</b>
DO NOT SCALE DRAWING	SCALE: 1:27	SHEET 2 OF 3		

ITEM NO.	PART NUMBER	DESCRIPTION	QTY.
1	B2019	Idler Assembly W/ Bearings	1
2	B2016	Bearing insert	2
3	B2015	Bearing 1.25"	2
4	B2017	Idler wheel	1
5	P2037	Dirt washer for trencher idler bearings	2
6	P2034	Trencher Idler Pin greasable	1
7	T2080 250 TN548-29	Holder washer	1



**PROPRIETARY AND CONFIDENTIAL**  
 THE INFORMATION CONTAINED IN THIS  
 DRAWING IS THE SOLE PROPERTY OF  
 BAUMALIGHT. ANY REPRODUCTION IN  
 PART OR AS A WHOLE WITHOUT THE  
 WRITTEN PERMISSION OF BAUMALIGHT  
 IS PROHIBITED.



Description
 Idler Assembly

Weight	Thickness in.	DATE 13-02-2014	DWG. NO.	REV
DO NOT SCALE DRAWING	SCALE: 1:5	SHEET 3 OF 3	B2019	R3