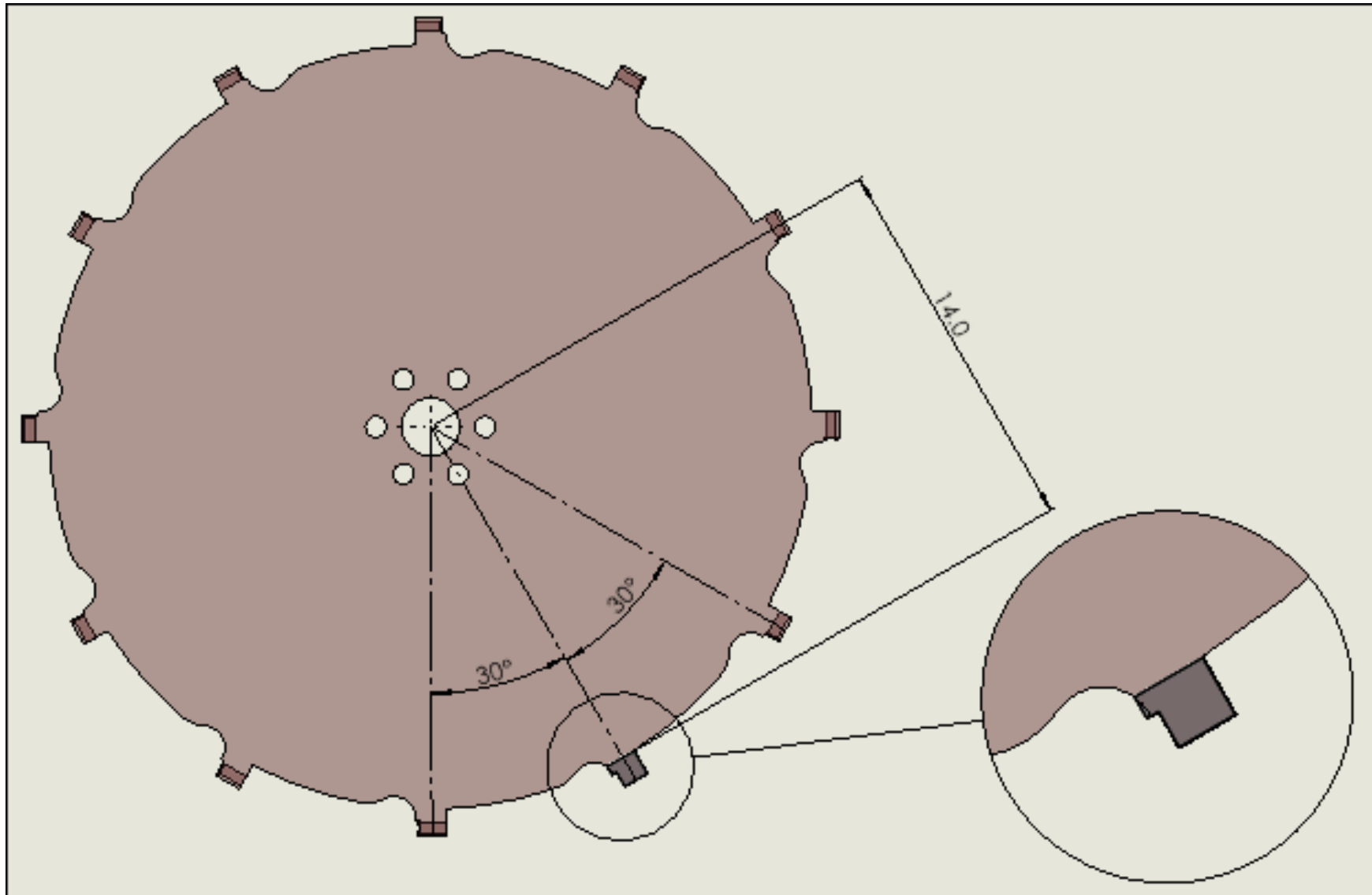
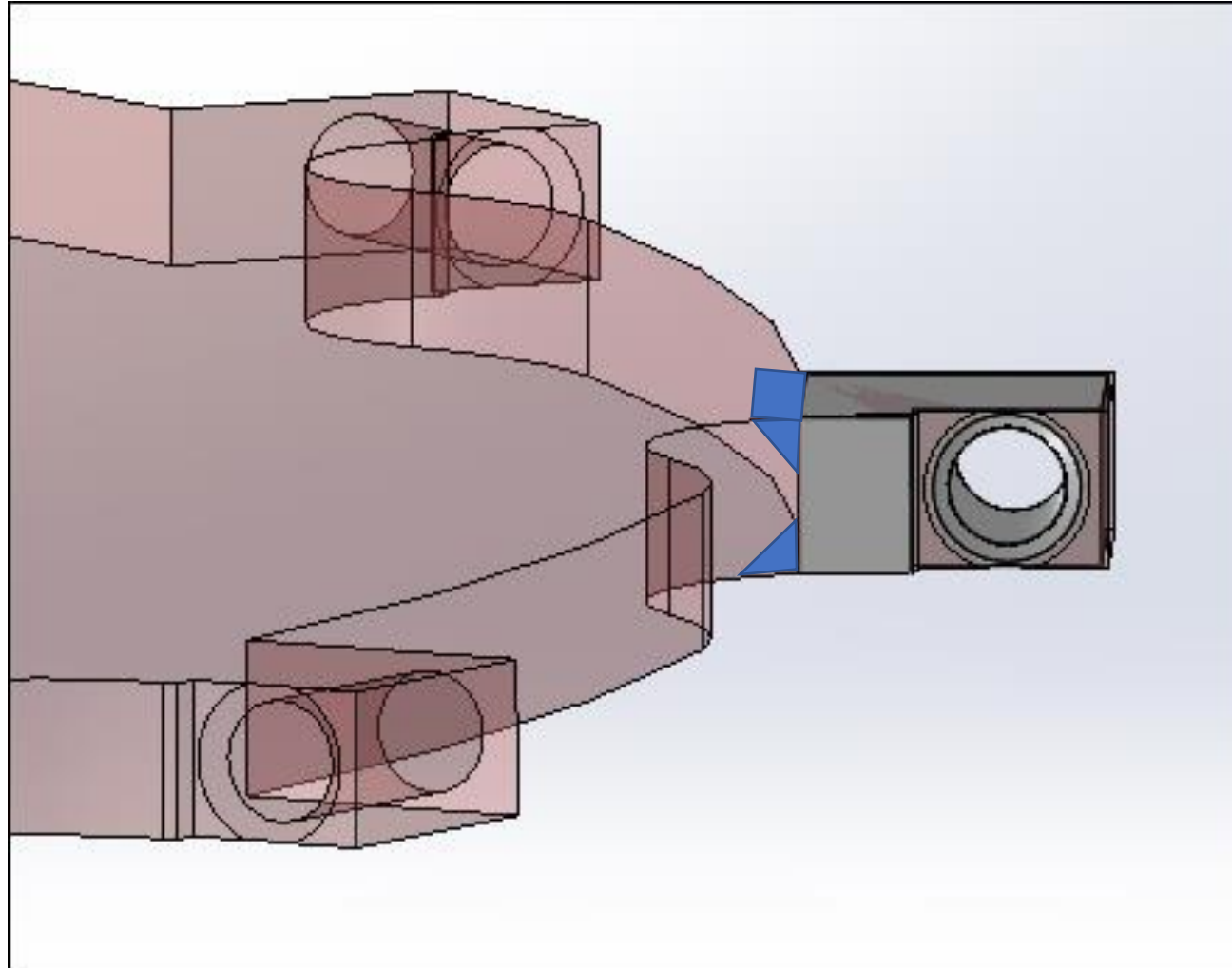


The inner face of the new tooth holder should be placed at 14" from the centre.
Centre of the tooth holders are placed at an angle of 30° with respect to each other.



It is recommended to have a chamfer grinded on the rotor edges to have a nice Bevel weld.
This will also help balance the weight of the rotor.



Make sure the face of the of the rotor and tooth holder is inline with each other.
Also make suer the new tooth holder does not project out from the overall diameter of rotor 30".

